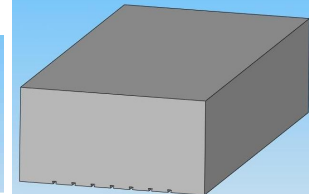
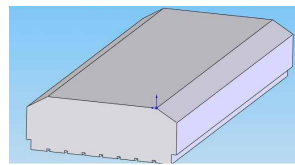




Polimate

YOUR EPS SOLUTIONS




Data Sheet

Model MP03

Dimensions	Moulding Area (width)	1200mm
	Pieces length for cycle	1500mm
	Moulding Area (height)	160+360mm adjustable
	Space req. without metal profiles	16500x2900x3800mm
	Space req. with metal profile	27000x2900x3800mm
Connections	Steam	DN80
	Cooling water	1" ½
	Condenser water	2" ½
	Air compressed	1" ½
	Drains	DN125
Pressures	Vacuum condenser volume	400 lt
	Pressure Filling tank volume	4x196lt
	Fillings connections	4x12
	Steam	3,5
	Air compressed	7
Consumptions	Water	4
	Energy	10 kWh/h
	Steam	130÷170Kg/h
	Air compressed	20 m³/h
	Water	15 m³/h
	Voltage	400V~/50Hz
	Installed power	kW 25

Standard Features

Compact structure in stainless steel designed to facilitate easy transportation, characterized by a horizontal repairable mould chamber and with variable height. Products can be made with continual length with variable heights and sizes. It's possible to mould with metal profile inside. Hot wire cutting with electronic position control. Polyurethane based paint with anticorrosion treatment. Hydraulic mould displacement.  deposits for material loading. Rational installation of energy distribution and valves connected with flanged joints. High performance vacuum condenser. Commercial components from multinational companies present throughout the worldwide market. Pneumatic installation with compact electrovalve system and filtering group with safety system. Proportional electronic control of steaming pressure, material injection, which can be selected from the control panel. Simultaneous display of all parameters and production process times. Touch screen operating panel with auto-diagnosis system that displays errors and their causes. 50 cycle storage. Delivery of backup memory support for the processing programmes for fast restoration of functions in case of breakdown.



PoliMate

YOUR EPS SOLUTIONS