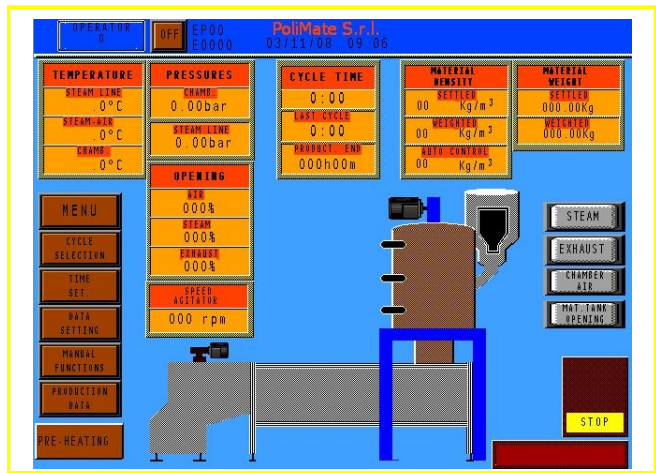




**PoliMate**

**YOUR EPS SOLUTIONS**



**Data Sheet**

**Model EP10**

<b>Dimensions</b>	Expansion volume	1,0 m <sup>3</sup>
	Expansion chamber	Ø 970mm x 1600mm
	Space requirement	6580x2700x4700mm
<b>Connections Ø</b>	Total weight	4000 Kg
	Steam (0,5-1bar)	DN65 PN16
	Compressed air	2"
	Condensate drain	1"
<b>Capacity</b>	Material transport	250 mm
	13 g/l	300 Kg/h approx.
	20 g/l	500 Kg/h approx.
<b>Consumptions</b>	30 g/l	650 Kg/h approx.
	Electrical energy	12 kWh/h approx.
	Steam (depending on density)	90÷120 Kg/h approx.
	Compressed air	22 m <sup>3</sup> /h approx.
	Voltage	400V~/50Hz
	Installed power	kW 20

**Standard Features**

- Wide range of densities can be obtained even with high volume models, thanks to the possibility of working with 3 different expansion levels.
- Raw material loading by variable speed screw or aspiration system, weighting by load cell
- Insulated stainless steel expansion chamber, with reduced bottom side for a better thermal exchange between steam and raw material.
- Material discharge by hatch closing for cycle time reduction and a better chamber cleaning.
- Aluminium fluid bed dryer with double floor for condensate water recovery, provided with inspection doors and Lexan bands
- Integrated proportional electronic controls for steam, air-steam mixture and chamber exhaust.
- Process temperature measurement and displaying.
- Operator interface with touch-screen colour screen to handle all process parameters in an easy and intuitive way.
- SMC pneumatic system realized with solenoid valve compact system and filter system with safety equipment.
- Storage capacity of 50 types of density and material.
- Automatic control of density with automatic correction which varies the quantity of raw material inserted in the expansion chamber.
- Production and processing data transferred on supplied printer(option), on memory cards or via Ethernet network connection.